

Academic Language  
Support Service



Loughborough  
University

# Pre-sessional Programmes 2023





## Pre-sessional Programmes focus

The main emphasis for the Pre-sessional Programmes is on academic English. Whilst you are expected to read and conduct research on your subject area for your programme work, the Pre-sessional Programmes cover English for academic purposes that can be applied to any discipline. These programmes are very different from other English language programmes students may have taken previously; they also develop your academic skills such as critical thinking and integrating sources and help you to understand UK academic conventions.

**Please note these programmes are full-time and attendance is compulsory. You should expect to study for at least 8 hours per day.**

### Aims

The Pre-sessional Programmes will prepare you for the demands of your programme of study by:

- increasing your overall level of English language proficiency;
- equipping you with the academic English and study skills required to cope with the learning demands of a Loughborough degree programme; and
- assisting your integration into the British social and academic environment.

### Learning outcomes

The Pre-sessional Programme is designed to equip you with the skills to succeed on your academic programme here at Loughborough University.

By the end of the programme, successful students should be better able to:

- deliver effective oral presentations;
- function within a variety of speaking situations in an academic context, including seminar discussions and tutorials;
- identify key points in a lecture and take effective notes;
- plan, structure, write and review extended pieces of writing;
- demonstrate an understanding of academic writing conventions, to include in-text citation, referencing, direct quotation and bibliographies;
- summarise and paraphrase effectively from written and spoken sources;
- write reflectively on their academic development and independent learning;
- use a range of reading strategies for different purposes;
- critically read, analyse and evaluate academic texts;
- locate, research and take effective notes from written sources;
- work independently and collaboratively.

### Assessments

Assessments cover each of the four skills; reading, writing, speaking and listening, and are based on the academic skills and language development you learn during the programme. Each of these assessments has been carefully planned into your timetabled learning. Experienced tutors will mark your work and provide personalised feedback to help guide you on the areas upon which you could improve.

## Contents

Pre-sessional Programmes focus	01
Pre-sessional dates, fees and entry requirements	02
Approach to learning	04
Pre-sessional features	05
Differences between online and campus-based programmes	07
Sample study days from the Weekly Syllabus	08
Online student testimonials	10
Campus-based student testimonials	12
Why would you want to study at Loughborough University?	14
Frequently Asked Questions	16

# Pre-sessional dates, fees and entry requirements



PROGRAMME	COST	LENGTH (WEEKS)	DATES	MINIMUM ENGLISH LANGUAGE REQUIREMENTS*	APPLICATION DEADLINE
<b>ONLINE PROGRAMME C</b>	£5390	11	Monday 26 June – Friday 15 September 2023	The minimum requirement for this course is IELTS 5.5 overall with no subtest below 5.0  Please note: Some schools have <b>higher</b> entry requirements Check here for <a href="#">undergraduate</a> , <a href="#">postgraduate taught</a> or <a href="#">postgraduate research</a> programme requirements	11.59pm BST (GMT +1) Sunday 28 May 2023
<b>ONLINE PROGRAMME D</b>	£2940	6	Monday 17 July – Friday 01 September 2023	The minimum requirement for this course is IELTS 6.0 overall with no subtest below 5.5  Please note: Some schools have <b>higher</b> entry requirements Check here for <a href="#">undergraduate</a> , <a href="#">postgraduate taught</a> or <a href="#">postgraduate research</a> programme requirements	11.59pm BST (GMT +1) Sunday 18 June 2023
<b>CAMPUS-BASED PROGRAMME C</b>	£5390	11	Tuesday 04 July – Friday 22 September 2023	The minimum requirement for this course is IELTS 5.5 overall with no subtest below 5.0  Please note: Some schools have <b>higher</b> entry requirements Check here for <a href="#">undergraduate</a> , <a href="#">postgraduate taught</a> or <a href="#">postgraduate research</a> programme requirements	11.59pm BST (GMT +1) Sunday 04 June 2023
<b>CAMPUS-BASED PROGRAMME D</b>	£2940	6	Tuesday 01 August – Friday 15 September 2023	The minimum requirement for this course is IELTS 6.0 overall with no subtest below 5.5. Secure English Language Test (SELT) required.  Please note: Some schools have <b>higher</b> entry requirements Check here for <a href="#">undergraduate</a> , <a href="#">postgraduate taught</a> or <a href="#">postgraduate research</a> programme requirements	11.59pm BST (GMT +1) Sunday 02 July 2023

## Approach to learning

Our Pre-sessional Programmes have been carefully designed to maximise your learning potential in a supportive environment.

We are using a successful teaching approach called 'flipped learning' where you work through learning materials before your live group seminar. Having these materials online means that you can look at them again in your own time, take a break when you want, look things up and fully prepare for your live group seminars with your tutor.

Dedicated study materials are available for you on our virtual learning environment called Learn. These materials have full instructions and carefully guide you through the learning tasks.

The study materials are broken down into three main areas:

- **programme materials** that you have to complete in preparation for your seminar or tutorial with your tutor;
- **homework** that helps to consolidate your understanding;
- and **independent learning** where you can focus on areas that you want to improve upon.

You will be working on these tasks either independently, with a study buddy or in a group. The study materials are delivered through online videos, interactive activities and worksheets. A weekly syllabus is published on Learn in advance to help you plan and manage your learning and time.



## Pre-sessional features



### LIVE GROUP SEMINARS

Part of your learning will be compulsory attendance at seminars. These are conducted by your tutor and include other pre-sessional students. Your seminars allow you to discuss learning and ideas with your peers; develop speaking practice and use of academic language, and work with others.

The number of seminars and tutorials you have each week can vary slightly depending upon the timetable and assessment schedule. On average you attend four live seminar sessions per week as well as having a weekly individual tutorial with your tutor.



### 1 TO 1 TUTORIALS WITH YOUR TUTOR

We understand the importance of having regular one to one tutorials with your tutor and these are carefully planned into your schedule. Typically held once a week, this time with your tutor is focused on key learning and assessment elements throughout the programme giving you time to ask questions and develop a deeper understanding of the personalised feedback you receive.



### PERSONALISED FEEDBACK

Throughout the programme, you will be regularly completing and submitting tasks. Your tutor provides you with personalised feedback on these tasks which you can then apply to further improve your key skills. The feedback and tasks are also discussed in your tutorials.



### SUPPORTED STUDY

We appreciate that undertaking study which may be different from what you are accustomed to can be challenging. A core team of highly experienced academic teaching and learning professionals who understand these challenges have designed the programme and provide extra support to help you achieve your learning goals in a supportive environment. We support you in a number of ways throughout the programme from seminars to your tutorials and buddy tasks. However, we also provide other support systems:

- Comprehensive induction to allow you to familiarise yourself with the learning environment, technology, and content of the programme. As part of the induction, you will attend live taught sessions as well as access programme materials, undertake tasks and meet your tutor and other students.
- Timely topic specific forums are provided at key times in your learning to provide another layer of support where you can ask questions for further clarification.
- Class forums are used during the programme where you can discuss specific topics such as academic culture with your seminar group and tutor.
- Action plans are provided to help you organise and monitor your personal learning needs in the different key skills. These can then be used in tutorials to help focus and aid your development. There are a range of specifically created additional resources to help you target key areas of your learning journey.
- An opportunity to be elected as a programme representative. As a programme representative you are a leader within your seminar group and can be the link between students and the core pre-sessional team.

This is an opportunity to help shape the programme through feedback from yourself and your peers. We are responsive to feedback and make alterations where possible to aid your learning. This mirrors what happens on your academic programmes at Loughborough University and Loughborough University London.

- Access to library materials with thousands of resources and support from Academic Librarians.
- An orientation programme.

### BUDDY TASKS

We learn so much when we work with others and our understanding of a subject increases. Within the programme there are specific tasks and activities you do with your 'study buddy'. A 'study buddy' is another student you work with and is allocated by your tutor. Your tutor will change who your 'study buddy' is during the programme to allow you to work with others and make new friends.

### INDEPENDENT LEARNING

Independent learning is very important when studying at a UK university and is a skill that we help you to develop within the supportive environment. As well as undertaking learning within your seminar group, and with a buddy, there are many learning activities and tasks that you complete alone. You are then able to bring that learning and understanding to your seminar, study buddy or to your tutorials to get further help and guidance as you develop.

You can access a weekly syllabus to refer to which explains things such as: study focus for each day of the week; whether you have seminars, tutorials or assessments; any homework; timings for the day, etc. The timings will be based around a normal GMT (UK time) working day. See examples of a sample study day in the next pages.

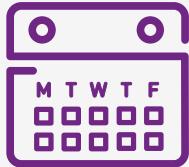
### TECHNOLOGY REQUIREMENTS – ONLINE AND CAMPUS-BASED

For both online and campus-based delivery, all students will be required to have the following technology for the full duration of their programme:

- Laptop/desktop of an appropriate specification:
  - Adequate drive space and memory (eg to run MS Teams, multimedia resources and store multiple files).
  - Working speakers, webcam and microphone (can be internal to your machine);
  - A smartphone capable of using the Duomobile app which is required for authentication to access university software (including the virtual learning environment, 'Learn');
  - A licenced and up to date version of Windows or Mac OS;
  - The latest version of Google Chrome or Firefox.
- A stable broadband connection (minimum internet speeds – 10Mbps). Campus-based students will be able to access adequate connection when on campus.
- We also recommend that students use a headset with a microphone for use during seminars and tutorials.

## Differences between online and campus-based programmes

Online	Campus-based
<p><b>Delivery</b> Based entirely online with seminars and tutorials conducted via Microsoft Teams and learning materials on the university's virtual learning environment called 'Learn'.</p>	<p><b>Delivery</b> Face-to-face classroom-based seminars and learning experience with materials available on the university's virtual learning environment called 'Learn'.</p>
<p><b>Student location</b> Study from the convenience of your own home/country. You will be required to have a quiet room to use to participate in seminars and tutorials. To attend assessments, you will need a private, quiet room.</p>	<p><b>Student location</b> Accommodation available on the Loughborough University campus. Enabling you to attend the Loughborough campus and experience life in the UK.</p>
<p><b>Structure</b> Online seminars conducted in the mornings (UK time) which last 1¾ hours. Weekly contact hours including tutorials are approximately 7½ hours. Independent weekly study average of 32½ hours.</p>	<p><b>Structure</b> Classroom-based seminars conducted in the mornings (UK time) and last 3¾ hours. Weekly contact hours including tutorials are approximately 15½ hours. Independent weekly study average of 24½ hours.</p>
<p><b>Class sizes</b> Approximately six students per seminar group allowing more individual attention from the tutor.</p>	<p><b>Class sizes</b> Approximately 12 students per seminar group.</p>
<p><b>Orientation</b> Dedicated online materials available for students to use.</p>	<p><b>Orientation</b> Campus-based series of activities including trips, helping student to adjust to life in the UK</p>



## Sample study days from the Weekly Syllabus

### ONLINE PRE-SESSIONAL STUDENT – EXPECTED MINIMUM 8 HOURS STUDY PER DAY

Morning time for a student based in Asia

#### MORNING

##### Programme materials for students

(complete before the seminar session)

- 1.7 Evaluating sources
- 1.8 Surveying sources

##### Set:

Source note-taking template

- 1.9 Research Task 2: Library search methods

##### Set:

Finding sources for the Literature Review

- 1.10 Reading research articles 1

##### Buddy task

- Share ideas for finding and choosing sources
- Review library search methods

#### AFTERNOON

##### Seminar

- 9.00-10.45am or
- 11.15am-1.00pm\*  
GMT+1 (British Summer Time)

Students will be assigned one of these seminar sessions daily according to the learning needs.

\* times may vary slightly.

##### Homework

- Source note-taking template
- Find sources for the literature review

### CAMPUS-BASED PRE-SESSIONAL STUDENT – EXPECTED MINIMUM 8 HOURS STUDY PER DAY

Student based on Loughborough campus

#### MORNING

##### Seminars

- 9.00-12.45pm\*  
Students attend both Seminar 1 and 2

\* times may vary slightly.

##### Seminar 1

- Review of academic integrity
- Presentations on proofreading / plagiarism

##### Seminar 2

- Review of searching for sources
- Students present their evaluation of a chosen source

#### AFTERNOON

##### Set tasks

- Research Task 2
- Source note-taking template

##### Programme materials

(completed for the following day)

- 1.4. Literature Search Guidance 2: Library search methods
- 1.5. Listening to lectures 1

##### Homework

- Listening extension activity 1: Ramsey Musallam (TED)

##### Buddy task

- Share ideas for finding and choosing sources
- Review library search methods and Research Task 1

## Online student testimonials

There are many different reasons we think you should undertake a Pre-sessional Programme, but let's see what our students say...

*I have studied English for many years; however, I did not feel confident in my knowledge. When I decided to study a masters degree in the UK, I struggled a few times with the IELTS test until I came across this pre-sessional English course.*

I thought this course was the same as my other English courses, however I found more than I expected. With this course I not only improved my English skills but it also allowed me to understand the academic culture of the UK. The teachers were very patient and friendly. They were willing to help us with whatever we need.

I highly recommend this course because it prepares you for university life in general. Thus, when I entered my master's program, I felt more confident in my English and I had an idea of what was expected of my academic performance. Studying a master's degree in another language is a huge challenge but I feel that having taken the pre-sessional English course is making it more bearable.

*Carolina, Ecuador  
Online Pre-sessional Programme  
Masters student in the School of Social Sciences and Humanities*



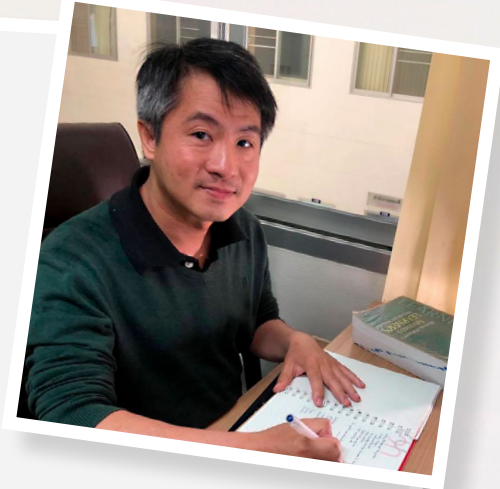
*"Honestly, I worried about the learning outcomes when this was conducted online. But finally, I realised this is as effective and the same as in person teaching."*

*The pre-sessional course is the pathway to be ready for higher education. It is not English for everyday life but the essentials for academic culture.*

Honestly, I worried about the learning outcomes when this was conducted online. But finally, I realised this is as effective and the same as in person teaching. I improved my English efficiency in every skill. I learned how to listen to lectures efficiently and easy ways for note-taking. The part that was very helpful for me was reading articles and using the note-taking matrix. Certainly, I improved my writing skill too. There are some techniques to help you write in an academic way and point out your own critical opinion. Buddy tasks and tutorial sessions were the best ways that gave me an opportunity to discuss appropriately with others.

Having classes online is not a problem for me but something that we have to face on nowadays. Data collection, presentations and also seminars tend to be more online than in-person. For this reason, an online class does not cut-off our social activities but prepares us to step into academic culture efficiently for today's circumstances.

*Pisit, Thailand  
Online Pre-sessional Programme  
Doctoral student in Social and Policy Studies*



*During the online pre-sessional course, we had seminars on Microsoft Teams every week. In the beginning, I was really nervous to speak and participate in the conversation because of my grammar mistakes.*

Nevertheless, my tutor encouraged me a lot, she gave me and other members in our group many chances to talk. For example, we had different topics of conversation and one student was the leader of this conversation to make introductions and ask everyone to express their view. So that everyone's speaking skills were developed and it made our seminars more meaningful.

*Stella, China  
Online Pre-sessional Programme  
Undergraduate student in the School of Sport, Exercise and Health Sciences*

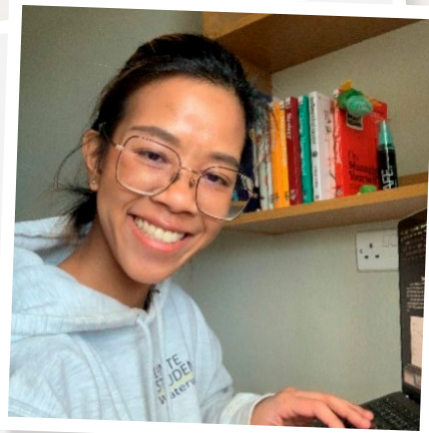


## Campus-based student testimonials

Taking the Pre-sessional Programme was the right decision for me so far. I've learnt several useful and effective skills that I use in my postgraduate student life. I love the way that teacher helps us to improve us into our better selves, increases our self-awareness and being there every time we've needed them

Before I came to UK I was worried about my writing and reading skills, however, after I studied on the Pre-sessional Programme, I've improved and gained more confidence in my English skills. From my perspective, I've gained a lot of skills from the Pre-sessional, such as summarising, paraphrasing, and matrixing (very useful!). I would like to tell anyone that is hesitating about applying, please don't! Not only just the academic side but more than that, the friendships from your classmates! It was very worth it and provided priceless memories.

**Chidabha, Thailand**  
Campus-based Pre-sessional Programme  
Masters student in the Loughborough Business School



Even though previous courses helped me to achieve a good English level, I decided to do the Pre-sessional Programme considering that I needed more knowledge about the language in an academic context. I liked how the programme is designed to practice new learning with the tutors.

In addition, the feedback that I received from the tutor was crucial for my process. In the past, I needed more confidence with my speaking skill. However, with the different daily activities that led me to practice, I now feel more relaxed when I have to talk. Because of the Pre-sessional, I now also feel more comfortable attending lectures in English. Additionally, the quality of my assignments improved a lot! Although the main aim of the Pre-sessional Programmes is to improve English skills, it also helps to adapt to the culture and the educational scheme of the UK, which could have significant differences to our own country's systems.

**Daniel, Columbia**  
Campus-based Pre-sessional Programme  
Masters student in the Loughborough Business School



I think there is a huge difference between the Pre-sessional Programme and a conventional English course in China. On the Pre-sessional Programme, the tutors and learning materials focus more on improving students' ability to communicate in English (oral and written).

Each session, which takes the form of a seminar, requires us to fully communicate and exchange ideas with each other according to the specific academic material given by the tutors. In the process of this exchange and discussion everyone's listening, speaking and vocabulary skills are enhanced. Meanwhile, after discussing with classmates, we gradually became more familiar, and I met my first foreign friends when I came to the UK.

Literature review writing is an inevitable hurdle for every UK university student, especially international students. The tutors went step by step from how to use the e-library, how to find literature, how to choose a topic, until we finally finished our literature review assignment. When the programme finished, I was able to adapt to the academic customs and culture of the UK much faster than the other students. Therefore, the Pre-sessional Programme has provided me with a very solid foundation for my further studies and has enabled me to fit in more quickly with studying and living at a UK university.

**Vincent, China**  
Campus-based Pre-sessional Programme  
Masters student in the Loughborough Business School





## Why would you want to study at Loughborough University?

Consistently top ten in the university guides, world class research, award winning teaching quality, there are so many reasons to want to study at Loughborough University.

We know you will have spent a lot of time and energy choosing it as the next step on your learning journey.



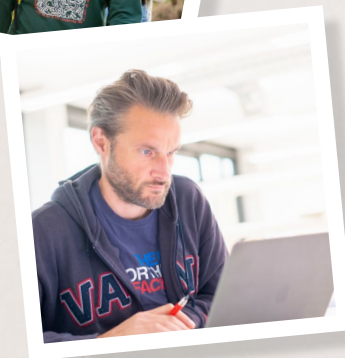
### Why take a Pre-sessional Programme at Loughborough University?

There are many different reasons we think you should undertake a Pre-sessional Programme, but let's see what our previous students thought:

99% of our campus-based and online pre-sessional student 2022 feedback would recommend the Pre-sessional Programmes to a friend.

"I enjoy the process of discussion and learning with my tutor and my classmates it makes me more confident. The most important thing is that I think I have learned a lot, which can help me better adapt to my future life in Loughborough University."

Pre-sessional student 2022



### The UK higher education system can be very different from what you are used to, do you understand the conventions?

100% of our online pre-sessional student 2022 feedback agreed that they had a better understanding of UK academic culture, conventions and expectations (eg avoiding plagiarism and independent learning).

"The Pre-sessional Programme is helpful to your doing your future studies. Especially if we have different academic cultures. Different academic cultures could be an obstacle to your successful academic life. However, if you join the Pre-sessional Programme, you can break this obstacle easier."

Pre-sessional 2022 student



### Do you feel prepared for starting your academic programme?

100% of our online pre-sessional student 2022 feedback agreed that the Pre-sessional Programme helped to prepare them for their academic programme.

"I really learned a lot during the Pre-sessional Programme. This period of time seems to be a treasure, laying the foundation for my future English study, I will cherish it."

Pre-sessional 2022 student



### Maybe you think the learning approach on an online programme won't be suitable for you?

99% of our online pre-sessional student 2022 feedback agreed that the 'flipped learning' approach was an effective way of learning.

"A positive and active learning atmosphere in the classroom and the careful guidance of the tutor."

Pre-sessional 2022 student

## Frequently Asked Questions

### 1 CAN I START ON AN ONLINE PROGRAMME AND THEN SWITCH TO CAMPUS-BASED?

Unfortunately, it is not possible to switch between programmes so think carefully about which would suit you best. Please note, if you register for the campus-based programme and are then unable to attend we are not able to offer an online alternative.

### 4 CAN I STUDY IN THE UK AND DO AN ONLINE PRE-SESSIONAL?

If you wish to study online you will need to be based in your home country. The University is unable to provide sponsorship for a visa to study in the UK on our online programmes. If you wish to study in the UK, our campus-based programmes might be a suitable option, please check entry requirements.

### 5 IS ACCOMMODATION AVAILABLE FOR THE CAMPUS-BASED PROGRAMME?

Yes, accommodation is available on the Loughborough University campus in one of the student halls. For more information, please see our [Pre-sessional webpage](#). If you book accommodation via a private provider, remember to check availability for the full duration of your programme.

### 2 DO ALL DEGREE PROGRAMMES HAVE THE SAME ENGLISH LANGUAGE ENTRY REQUIREMENTS FOR PRE-SESSIONAL PROGRAMMES?

Good question! Not all programmes have the same requirements and in some schools they ask for higher scores. If you want to join a programme in any of the following schools or departments, please check their requirements: Design, Communication and Media; Social Sciences and Humanities; Sport; Exercise and Health Science. Further information can be found on the [Pre-sessional Programme entry requirements page](#). Please select your suitable level of study for specific school requirements.

### 6 WHEN WILL I BE ABLE TO GET MY CERTIFICATE OF ACCEPTANCE FOR STUDIES (CAS) SO I CAN GET MY VISA?

If you are studying a campus-based programme, your CAS will be issued to you by the relevant Admissions Office handling your application in plenty of time for you to obtain a visa and travel to the UK. You must have paid your CAS or commitment deposit first.

If you are studying an online programme, a CAS for your degree will be issued when you have successfully passed the programme and your grades have been approved by a Programme Board. You must also have met all other conditions of your offer and provided evidence of this to the Admissions Office handling your application. CAS will be issued to students from 1 September. This should allow enough time for you to obtain your visa and travel to the UK for the start of term. We cannot issue a CAS earlier than 1 September 2023 for online programmes.

If you are studying a campus-based Pre-sessional Programme and are issued with a CAS to cover your pre-sessional studies only, a CAS for your degree will be issued to you once you have successfully completed your Pre-sessional Programme.

For campus-based programmes, your CAS will be issued once you have paid your [CAS deposit](#) and the payment has been confirmed by Flywire. If the start date of the Pre-sessional Programme is more than three months away, your CAS will be issued to you nearer the start date.

### 3 CAN I DO A PRE-SESSIONAL PROGRAMME THIS YEAR AND DEFER MY ENTRY TO 2024?

No, if you take an online Pre-sessional Programme this year but defer to October 2024, we will ask you to re-take a Pre-sessional Programme next year, or obtain another acceptable [English language qualification](#).

### 7 WHAT IS THE UNIVERSITY DOING ABOUT COVID-19?

For information about the University's response to Covid, please see our [Pre-sessional webpages](#).





CONSISTENTLY  
RANKED AS A TOP TEN  
UK UNIVERSITY


**General enquiries**  
Loughborough University  
Leicestershire  
LE11 3TU UK


**Academic Language Support Service**  
E: [alss@lboro.ac.uk](mailto:alss@lboro.ac.uk)

**Admissions Office**  
T: +44 (0)1509 222496  
E: [preessionaladmissions@lboro.ac.uk](mailto:preessionaladmissions@lboro.ac.uk)  
[www.lboro.ac.uk/student-services/preessional-programmes](http://www.lboro.ac.uk/student-services/preessional-programmes)

 @lborouniversity

 /lborouniversity

 /lborouniversity

 /lborouniversity